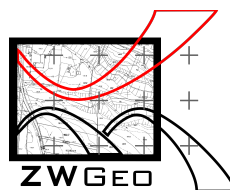


User manual to application ZWGeo 2019

ZWGeo 2019



Krzysztof Ruszyński
Izabela Cholewa

ZWGeo 2019

Version 2019.0.01 (10-10-2018)

All rights reserved including the right of reproduction in whole or in part in any form. No part of this publication may be reproduced or transmitted in any form or by any means, electronic or mechanical, including photocopying, recording, or by any information storage and retrieval system, without prior permission from Usługi Informatyczne "SZANSA" - Gabriela Cisyńska-Matuszek.

All signs found in the text are trademarks or registered trademarks of their respective owners. Usługi Informatyczne "SZANSA" - Gabriela Cisyńska-Matuszek has made its best effort to deliver complete and reliable information within this manual.

The firm shall not be held liable for the usage, or for any potential breach of patent or copyrights included within the manual.

Usługi Informatyczne "SZANSA" - Gabriela Cisyńska-Matuszek may in no way be held responsible for damage that may occur as a result of and/or when using the information found within the manual.

Usługi Informatyczne "SZANSA" - Gabriela Cisyńska-Matuszek

ul. Świerkowa 25

43-305 Bielsko-Biała

NIP 937-212-97-52














www.zwcad.pl

tel. +48 33 307 01 95

Copyright © Usługi Informatyczne "SZANSA" - Gabriela Cisyńska-Matuszek



Table of contents

Table of contents.....	3
1 Description	5
2 Requirements	5
3 Support	5
4 Installation.....	5
5 Activation of application	6
5.1 Online Activation	7
5.2 Offline Activation.....	7
5.3 Transfer of a license	8
5.3.1 Returning the license.....	8
6 ZWGEO Commands	10
6.1 Mark points 	10
6.2 Save points 	11
6.3 Load points from file 	12
6.4 Save text to external file 	13
6.5 Inserts all rasters images from folder 	13
6.6 Inserts many selected raster images 	14
6.7 Insert fence markings 	14
6.8 Insert coordinates descriptor 	15
6.9 Insert array of crosses 	15
6.10 Mask entities lebow MText 	16
6.11 Command : ZWGEO:MoveAbove 	16
7 ZWGEO Switch.....	17
7.1 Turn on\off group 12345678	17
7.2 Turn on\off all groups ON OFF	18
8 Check update ZWGEO 2019 	19
9 Calculation module.....	19
9.1  Rectangular offset.....	19

- 10 Additional information 20
 - 10.1 After install application icons are not visible. 20
 - 10.2 Manual load of application..... 20
 - 10.3 Manual load menu. 21

1 Description

Application ZWGEO 2019 is application (add-on) which help in surveyor work, in following area:

- 1 Mark points on project by name and number
- 2 Add possibility of save points in external text files
- 3 Add possibility of load points from external text files

2 Requirements

ZWGeo is an application (add-on) for ZWCAD 2019. It works with the most recent version of ZWCAD 2019.

3 Support

Technical support is available from 8 am to 4 pm from Monday to Friday, we invite you to contact us by e-mail or telephone.

E-mail: pomoc@zwcad.pl

Phone: 33 474 04 03

4 Installation

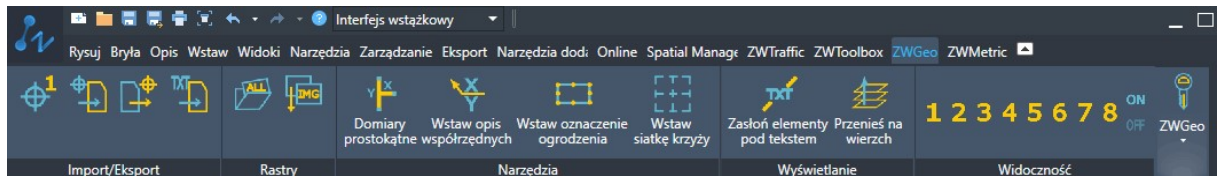
Application installs automatically after run downloaded installation package.

Default application is installed in folder C:\Szansa\ZWGEO\2019\EN. In time of installation, it's possible to set different installation path. This is not recommended especially in Windows Vista, Windows 7, Windows 8, Windows 10. Build in UAC function in this systems lock some functions of application.

After correct installation and run ZWCAD. Application ZWGEO 2019 should load automatically. On ZWCAD window, there should be toolbar as below.



If for some reasons application and menu will not be loaded automatically, You can load it manual following instructions on chapter Manual load of application .

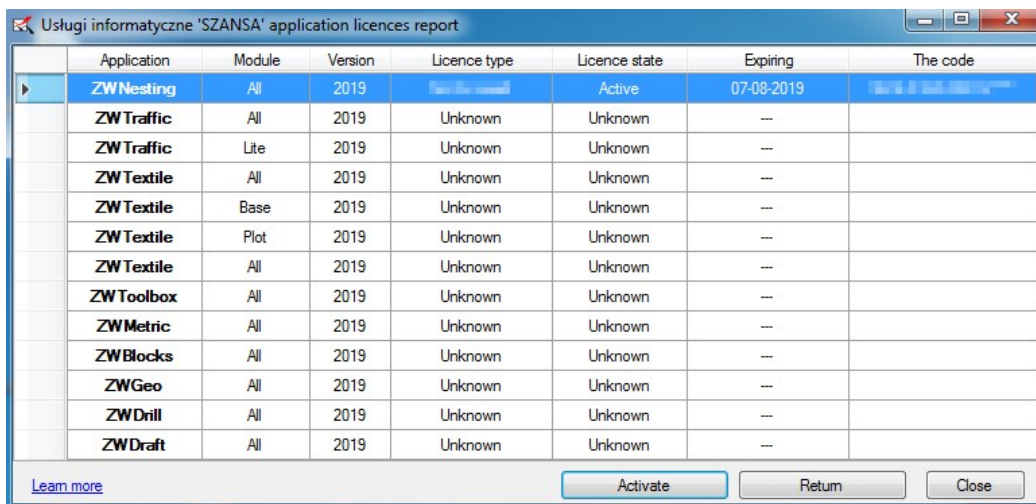


5 Activation of application

Activation must be done on user account with administration rights.

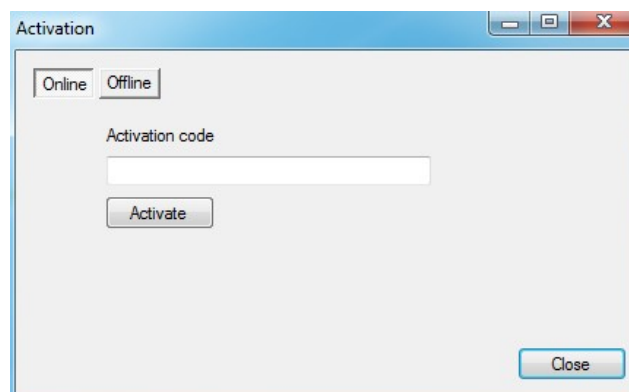
By 30 days, User can test application without need of activation. If You want to use application after this period You should buy it. During realization of order there will be mail sent to customer with Activation code.

To activate application You should go to path C:\Szansa\ZWGEO\2019\EN, or other where application have been installed, find file Aktywator_2019.exe. In operating systems such as Windows Vista, Windows 7, Windows 8 and Windows 10, Right button click on its icon and choose “Run As Administrator”.



Please click on “**Activate**”.

A choice between activating the application online or offline will be present.

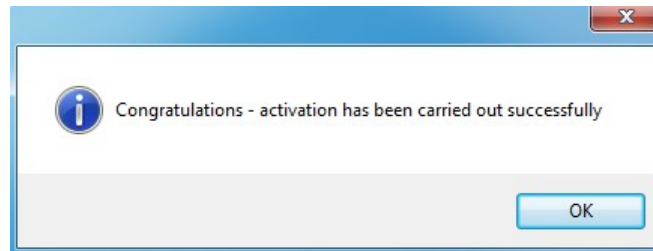


5.1 Online Activation

Please note: Online activation requires an Internet connection. If there is no internet connection available please use the Offline Activation (**Błąd! Nie można odnaleźć źródła odwołania.** Offline Activation).

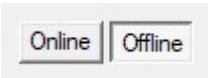
In the field “**Activation code**” please type in the information sent during realization of the order, afterwards click on “**Activate**”.

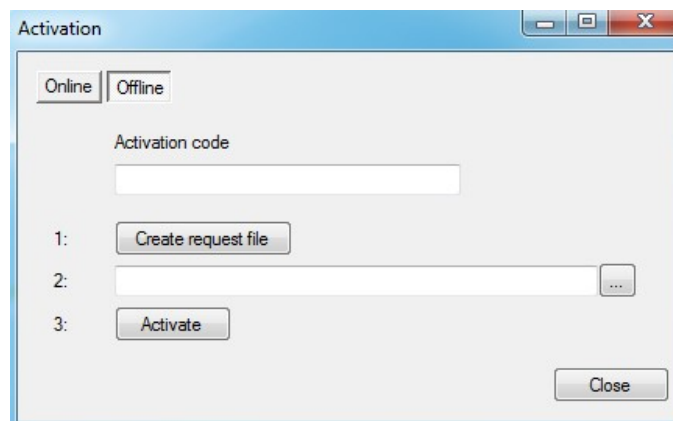
An information window will pop up confirming the activation.



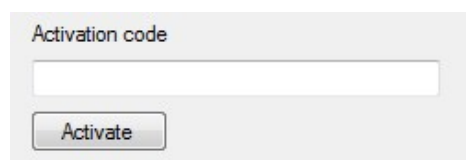
Once ZWCAD is launched, all functions of the program should be loaded and available.

5.2 Offline Activation

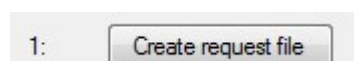
In the “**Offline**” tab  additional steps are required to complete the activation.



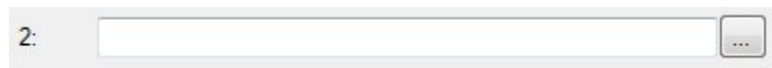
In the field “**Activation code**” please type in the information sent during realization of the order.



Afterwards it is necessary to click on “Create a request file”, it will create an additional file which needs to be saved on the desktop or in any other directory of the computer.



The file needs to be sent in a form of an attachment to, pomoc@zwcad.pl and a reply will consist of response file which then needs to be loaded in the activator:

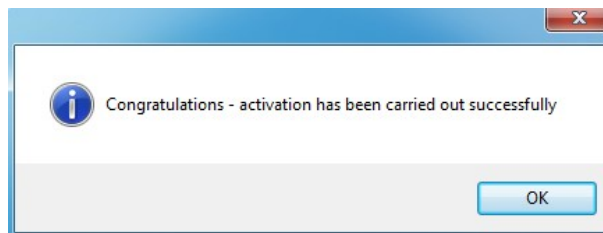


Response file needs to be saved on the computer and its localization needs to be determined by clicking on the following icon

Once the response file is loaded, click on **“Activate”**.



An information window will pop up confirming the activation.



Once ZWCAD is launched, all functions of the program should be loaded and available.

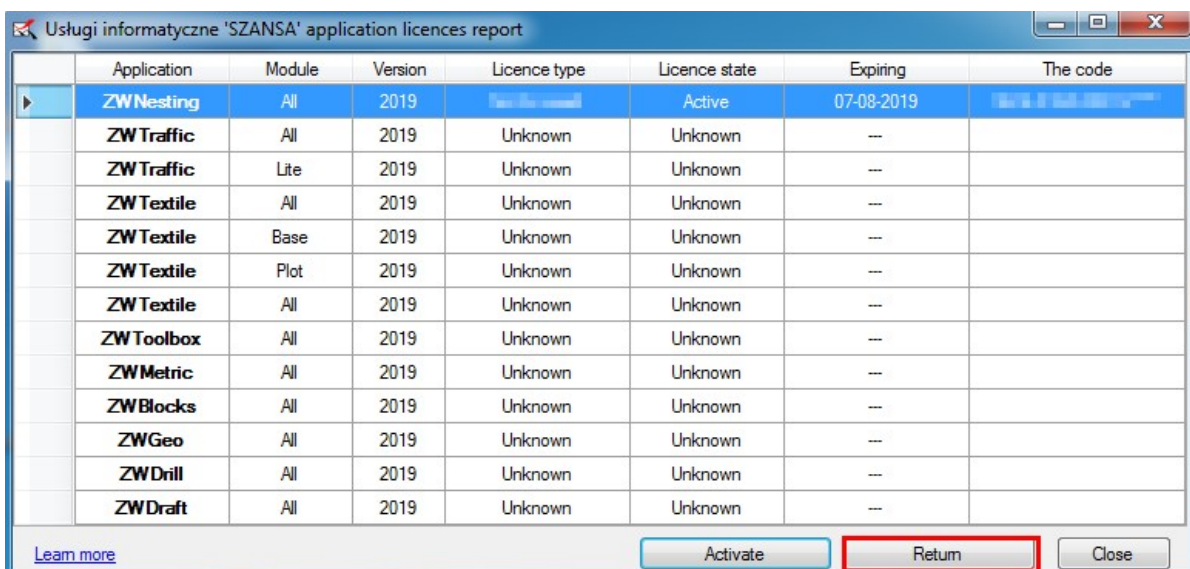
5.3 Transfer of a license

The license of UISZANSA applications in the form of a program code can be transferred to a different workstation.

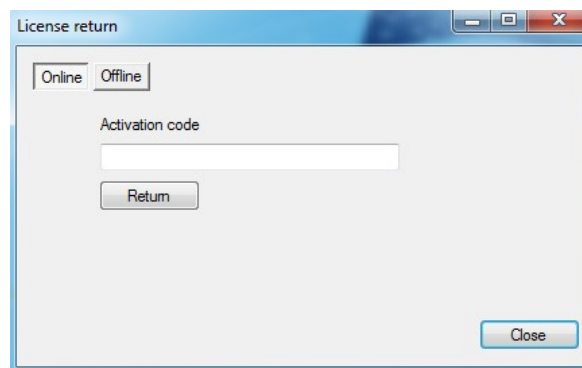
In order to transfer the license to a different computer, it is necessary to return the active license and once that is done, it will be possible to activate the license on a different Workstation.

5.3.1 Returning the license

License return is available in the UISZANSA Activator window.



Once **“Return”** has been clicked on, an additional window will appear in which it will be possible to return the license, either online or offline.

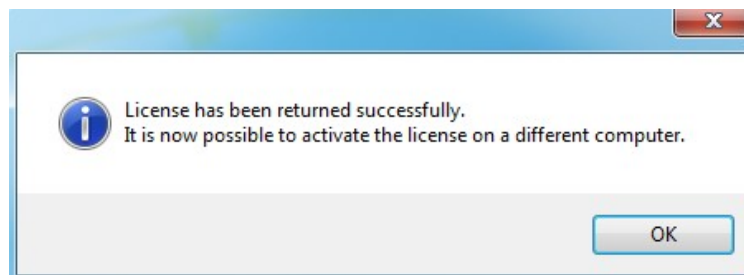


5.3.1.1 Online return

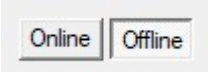
Please note: Online return requires an Internet connection. If there is no internet connection available please use the Offline return (3.1.2 Offline return).

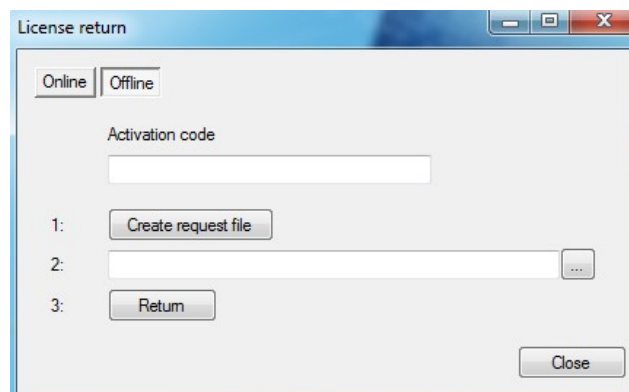
To carry out the online return, please type in your license details followed by clicking on **“Return”**.

Once confirmed, the license will be usable on a different workstation.

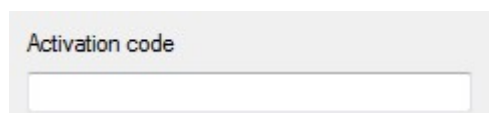


5.3.1.2 Offline return

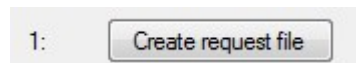
In the **„Offline”** tab  additional steps are required to complete the return of a license.



In the field **„Activation code”** please type in your license details.




Afterwards it is necessary to click on “Create a request file”, it will create an additional file which needs to be saved on the desktop or in any other directory of the computer.

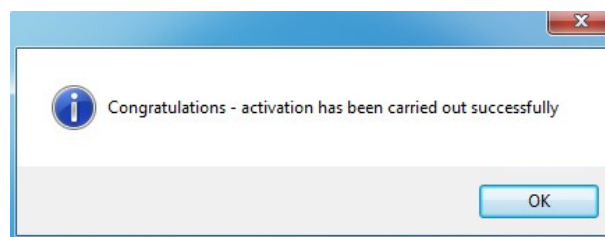


The file needs to be sent in a form of an attachment to, pomoc@zwcad.pl and a reply will consist of response file which then needs to be loaded in the activator:



Response file needs to be saved on the computer and its localization needs to be determined by clicking on the following icon .

Once the response file is loaded, click on “Return”



Once ZWCAD is launched, all functions of the program should be loaded and available.

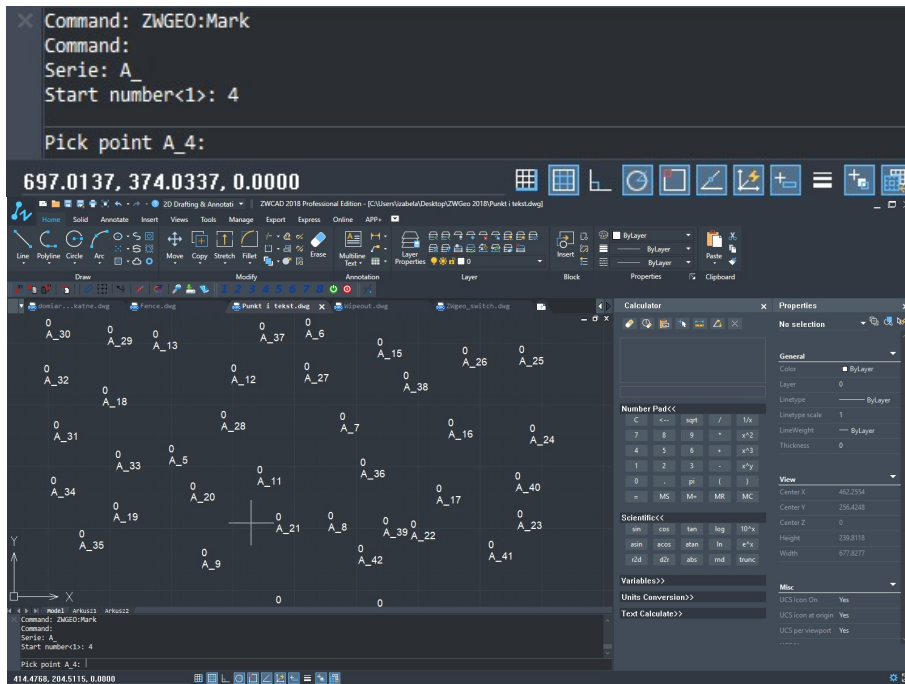
6 ZWGEO Commands

6.1 Mark points

Command: ZWGEO:MARK

Command let user mark points by insert point entity and text containing series and number in points clicked by User.

After run command User will be asked to input series and start number. After click each point in clicked point inserted will be point and text where number will be increased by 1 in each point.

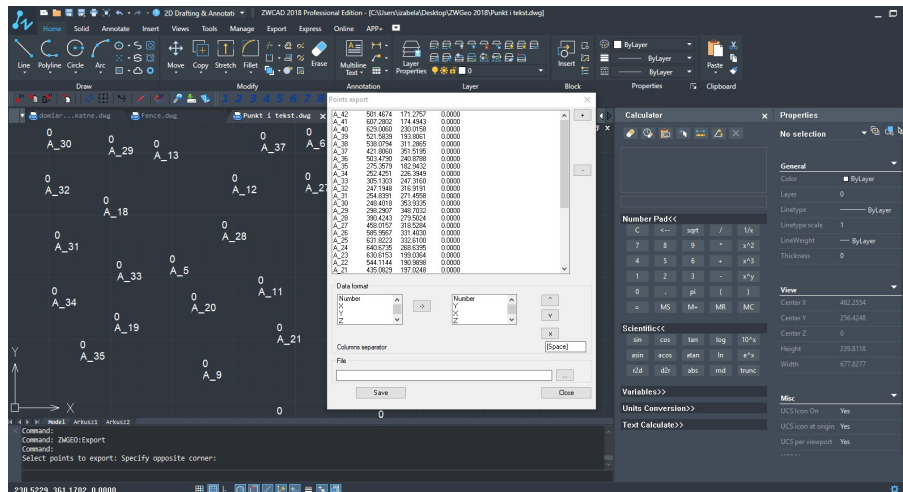


6.2 Save points

Command: ZWGEO:EXPORT

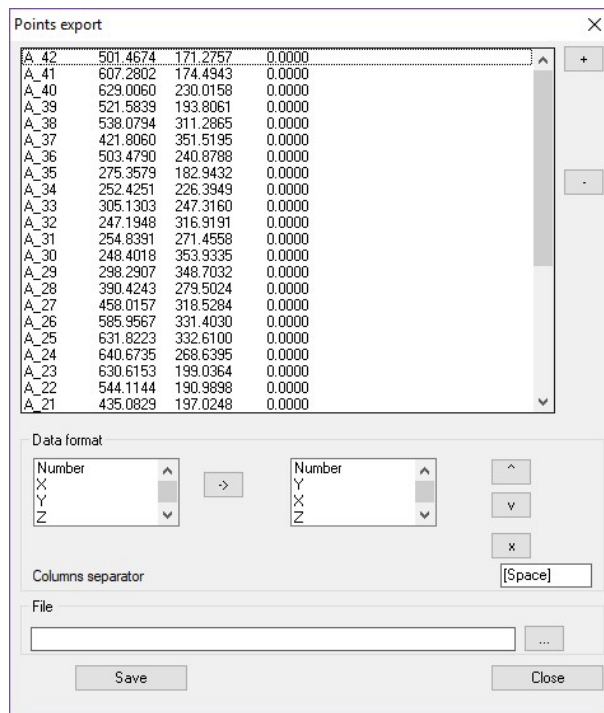
Command will export coordinates of points into text files.

After run command, application will display window:



In this window there is a list of points selected from drawing. If You want to select new points, click point [+], and application will ask You to select points. You can remove points from this list by [-].

In this window You can also define format of file, columns order and separator. And also You should write or select path to file where points will be stored. After click point [Save], points will be saved.

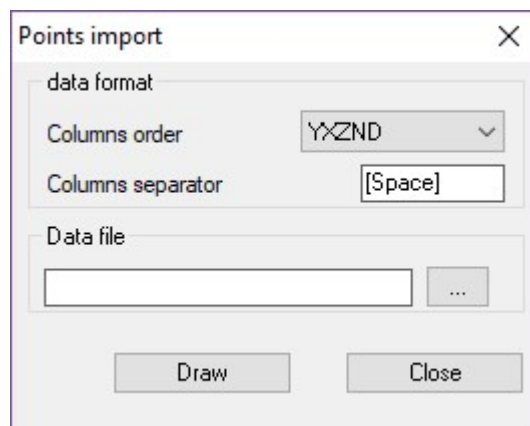


6.3 Load points from file

Command: ZWGEO:IMPORT

Command inserts into drawing points defined in text files.

After run command application will display window:

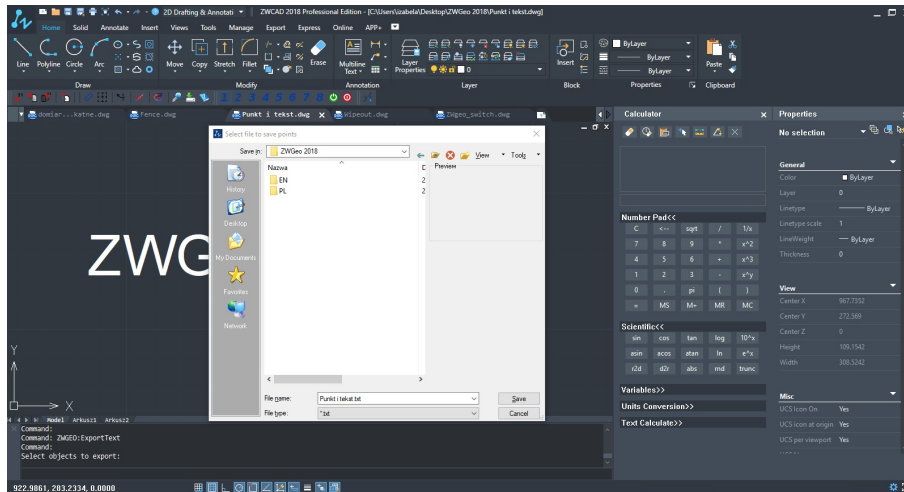


In this window User may select format of file with data, columns order and separator of columns, also User may select file with data. After click button [Draw], application will insert points, numbers and blocks symbols if contained on data file.

6.4 Save text to external file

Command: ZWGEO:ExportText

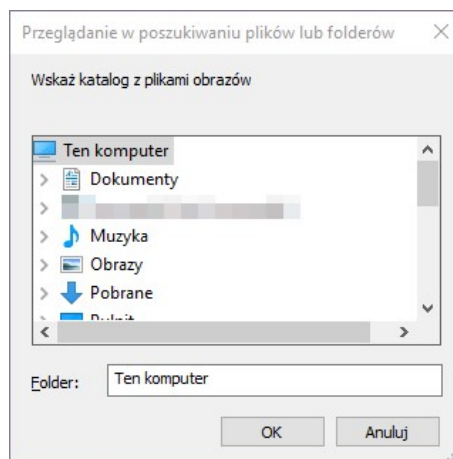
By this command You can export values of texts into external text file. After run command it's enough to select Texts or MTexts and path to text file where data will be stored.



6.5 Inserts all rasters images from folder

Command: ZWGEO:RastersFromFolder

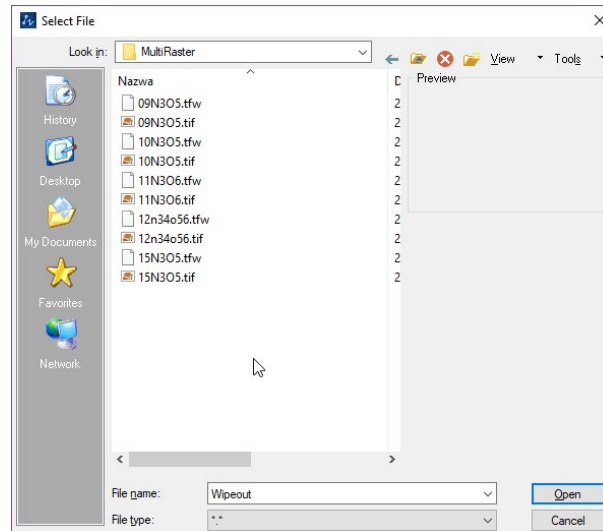
Insert all raster images from selected folder into project.



6.6 Inserts many selected raster images

Command: ZWGEO:MultiRaster

Function will let You select many raster images, and insert it automatically using positioning file.

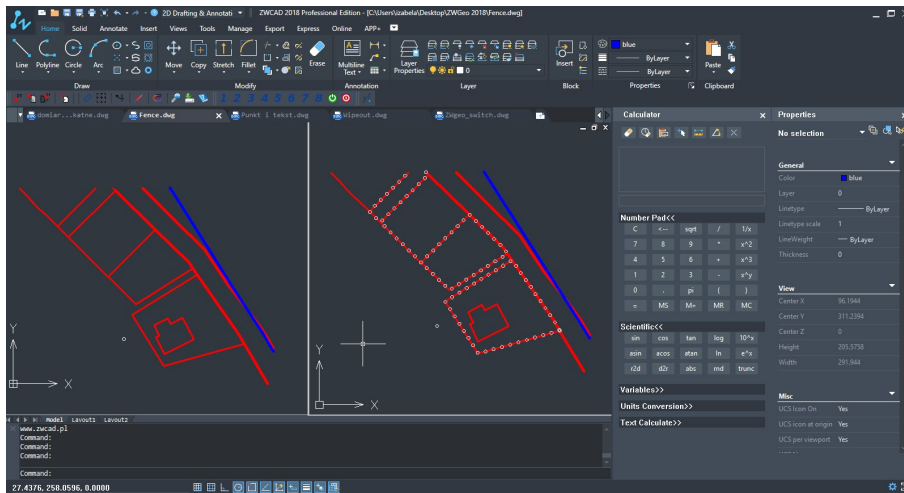


6.7 Insert fence markings

Command: ZWGEO:Fence

Draw fence by multiple copy of selected object along selected path. To draw such fence You should:

1. Draw symbol which should be copied
2. Draw axis of fence (lines or polylines)
3. Run command
4. Select symbol to copy
5. Pick base point
6. Write distance between symbols, by write numeric value or click two points
7. Select fence objects, the same drawn on point 2.



On picture above You can see project before and after run command.

6.8 Insert coordinates descriptor

Command : ZWGEOMarkCoordsWithLeader

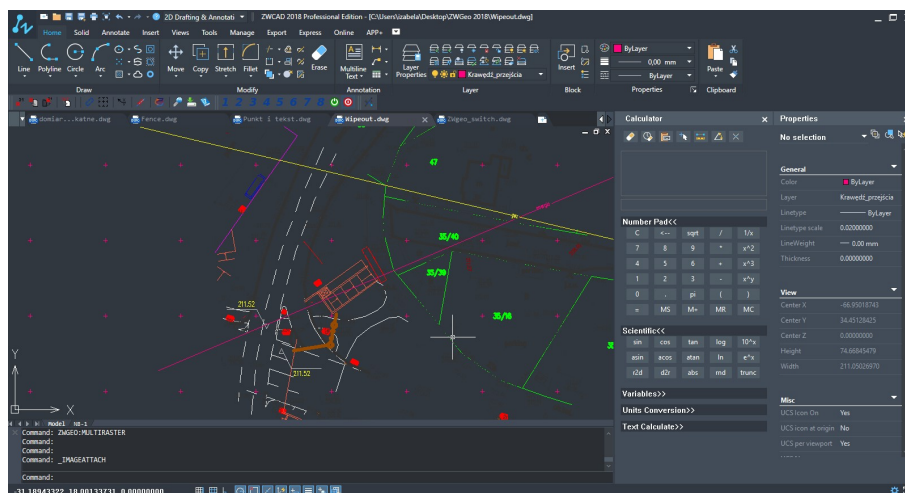
By this command You can mark points in project by describe coordinates X and Y.

Application will ask You to pick point and insert description block in picked point, If You click next points, there will be leader connecting first click point with the rest of points, and description block will be always on last picked point.

6.9 Insert array of crosses

Command : ZWGEOMarkCrosses

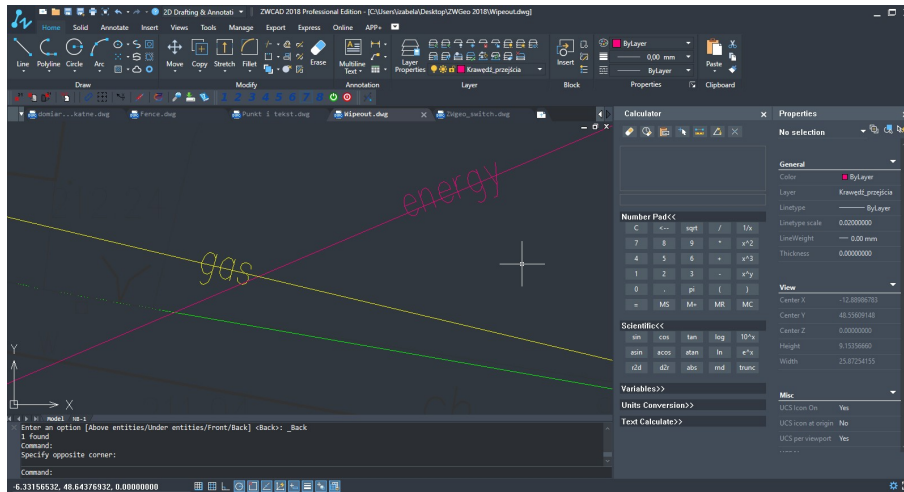
Command will draw array of crosses in range – windows selected by two opposite points.



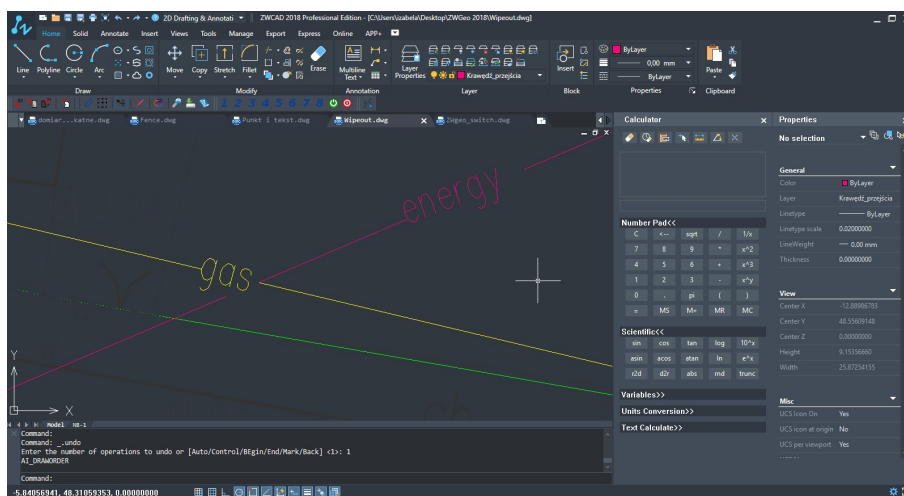
In the command bar You have to specify distance between cross marks.

6.10 Mask entities lebow MText

Command : ZWGEO:Wipeout

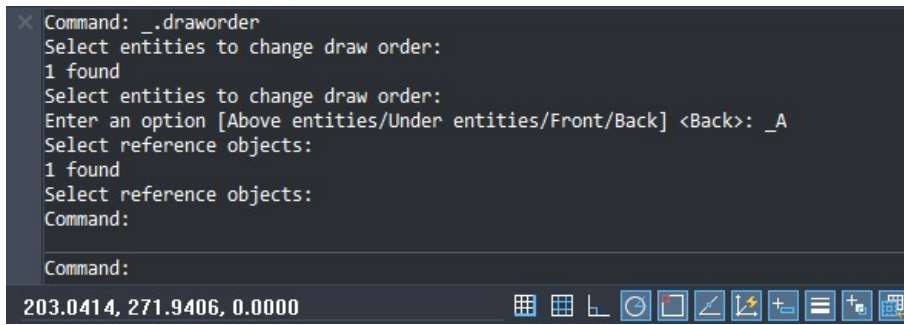


This command help You to make drawing more readable by covering objects under MText by wipeout. All You need to do is run command and select MText entity. Everything under this MText will not be visible, but it will there like line on picture above, will not be split into two separate lines but only not visible in rande under MText.



6.11 Command : ZWGEO:MoveAbove

This command is very usefull with connection with previous one. In such example You should run command ZWGEO:MoveAbove and select those entities, which should be over the other ones, and then select one entity which should be at the bottom of draw order.



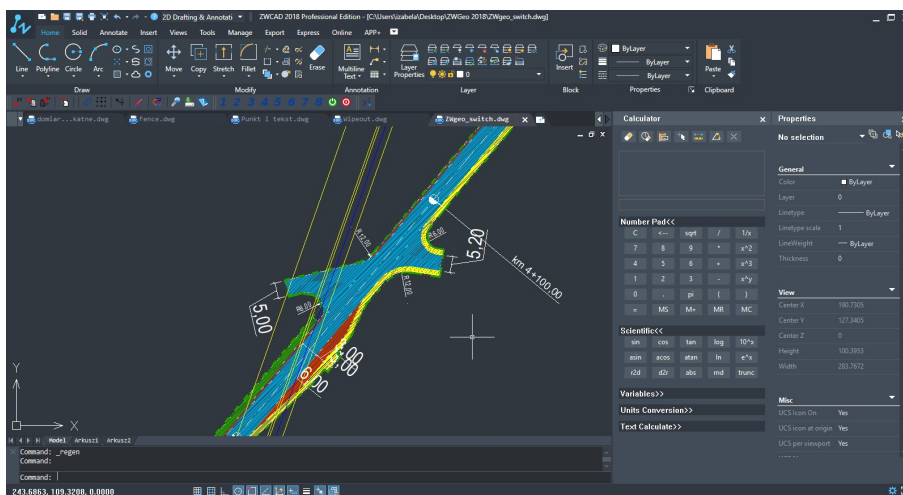
7 ZWGeo Switch

Function bar responsible for the creation of groups of objects by specifying their visibility.

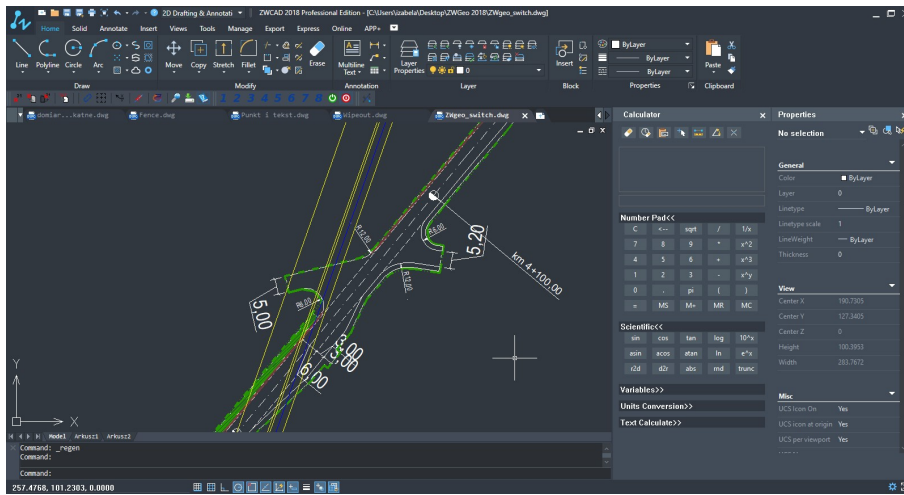


7.1 Turn on\off group 12345678

After running the command, indicate the items that will be one of the first group of objects. After selecting the items and then approving the Enter, previously selected objects will not be visible. To enable it, you have to run the command. In this way, the user can quickly turn on and off groups of elements in the drawing.



The user can make eight groups of objects in the drawing, they are formed in an analogous manner.

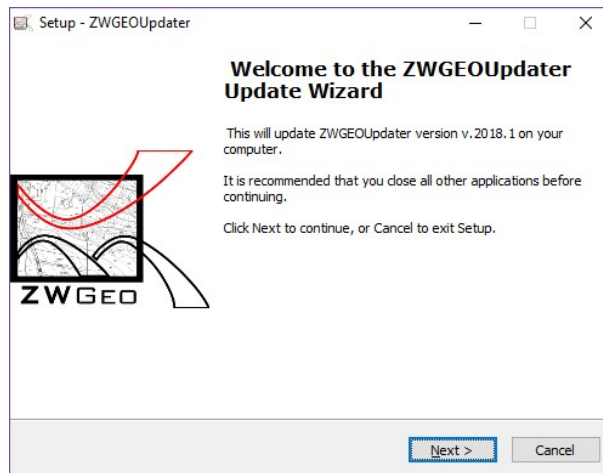


7.2 Turn on\off all groups **ON OFF**

Functions allow You to turn off or turn on all previously defined object groups 1-8.

8 Check update ZWGEO 2019

You have the ability to check whether it has the latest version of the overlay, which is under license therefrom.



After clicking "Next" program will download and install a newer version of the overlay, if one appeared.

9 Calculation module

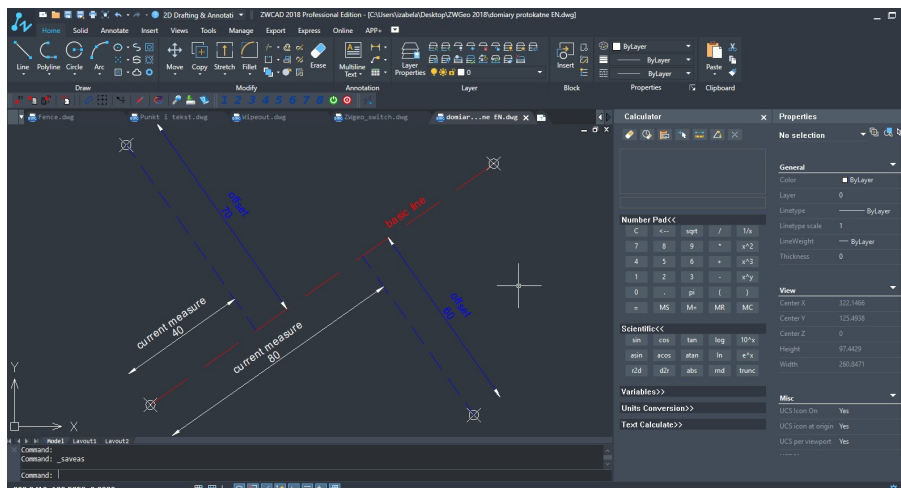
9.1 Rectangular offset

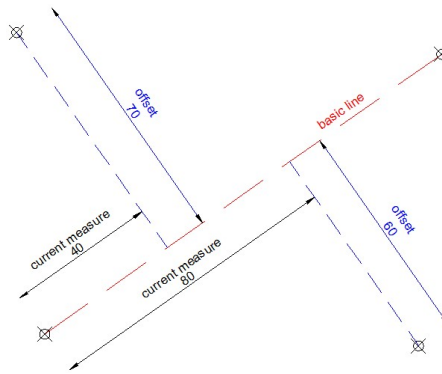
Offsets square is a function used to measure the details terrain.

After activating the function, indicate two points on the base line.

Then please specify the distance and offset

The location corresponding to the entered value will be inserted point.

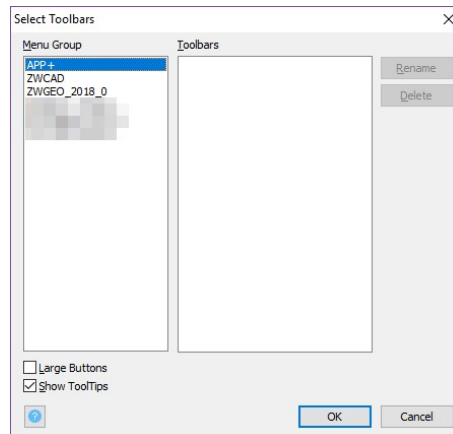




10 Additional information

10.1 After install application icons are not visible.

After install ZWGEO and run ZWCAD, icons should be visible. If You use Ribbon interface, Icons may not be visible, in this case run command `_Toolbar`.



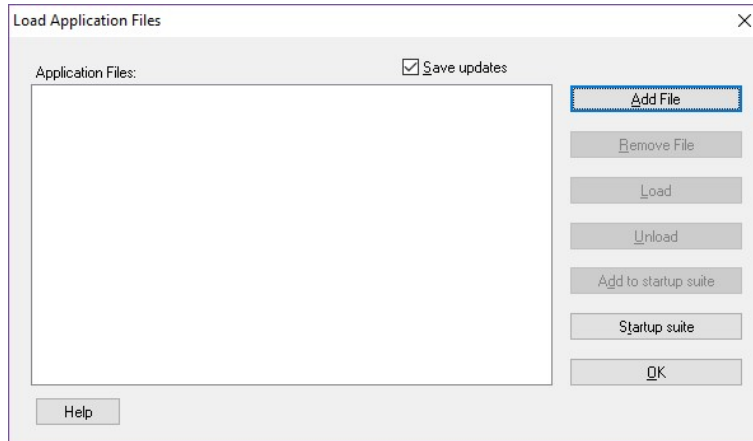
On displayed window please activate tab „Toolbars”. In list please select ZWGEO, and next please mark field ZWGEO 2019. After close window, Toolbar should be visible.

If on this window, there is no ZWGEO 2019, application is not loaded. In this case please follow steps from point: Manual load of application .

10.2 Manual load of application

After installation of application, it should be automatically load to ZWCAD. Function should be available and toolbar with icons should be visible. If for some reasons it's not load automatically, You should load in manually. To do it, You should follow steps:

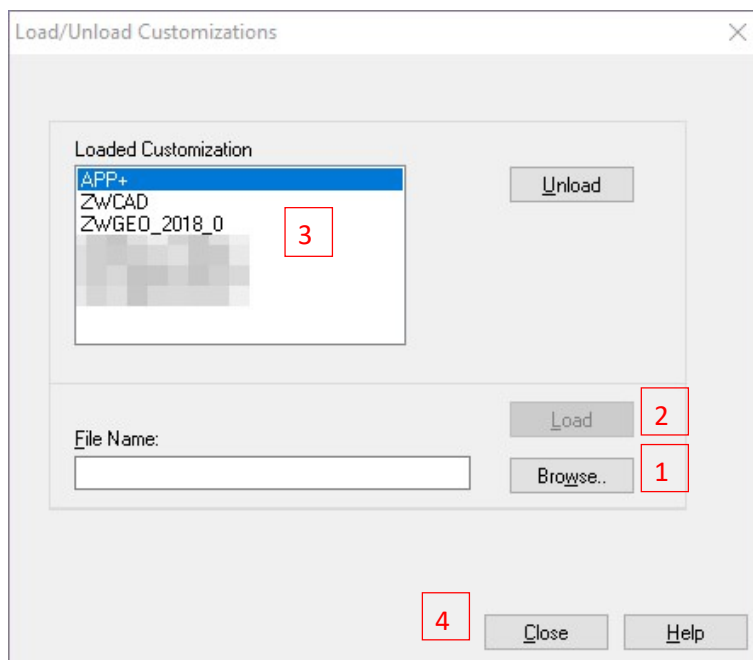
1. Run command `_apload` and You will see window:



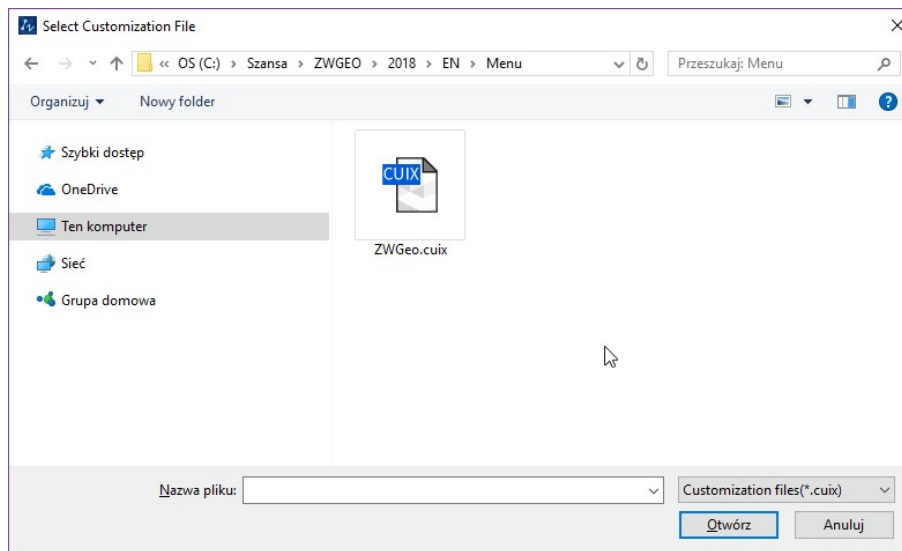
2. Click Add File.
3. In new open window change default extension to `.zel`. then find path where application have been installed. Default its `C:\Szansa\ ZWGEO\2019\EN`, select file `ZWGEO.zelx` and click Open.
4. On `apload` window click Load to load application,
5. If You want application to be loaded automatically each time You run ZWCAD, please select `ZWGeo.zelx` on list of files to load, and click button Add to startup suite.

10.3 Manual load menu.

1. In command line please type `„_menuload”` ZWCAD will display window.



2. Please press button [Browse] [1]. In new window.



Please find file „ZWGeo.cuix”. Default location of this file is:

`C:\Szansa\ZWGEO\2019\EN\Menu\`, but You may change it in time of installation.

3. Select file and press [Open].
4. Load file by press „Load”[2].
5. On list [3] new item will be display, that confirms corret load of menu.
6. By button „Close”[4] You may close window. On main window of ZWCAD, new toolbar with icons will be display.